

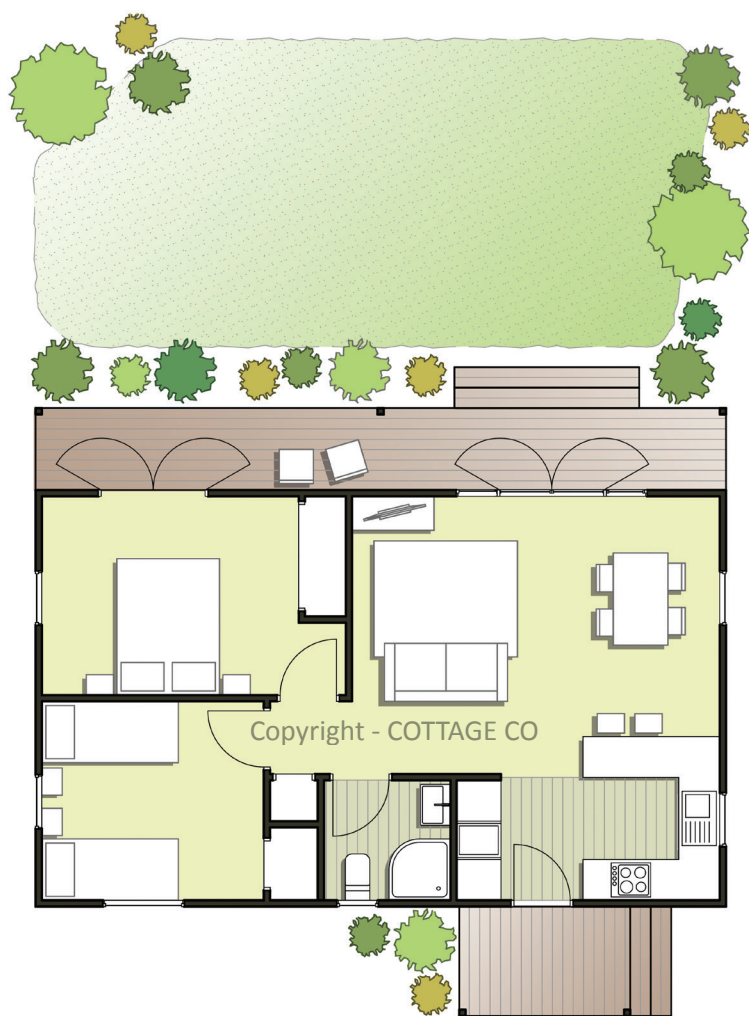
LARGE TWO BEDROOM COTTAGE

65m²



The largest of our transportable homes, our two bedroom COTTAGE CO cottage provides a generous and practical sized living space. A classic entry porch leads the way through to a well set-out kitchen space and opens into a large open plan living and dining area with french doors opening out onto a full length verandah and deck.

Accessed off the living space, the 2 double bedrooms are light and bright and come with built in robes. With the larger master bedroom also having french doors opening onto the verandah. The bathroom has all the space you need with a useful storage cupboard and all the typical modern bathroom fixtures. T&G panelling and dado in the living area as well as architraves add a touch of class throughout. The laundry can also be found neatly tucked away in a full height cupboard near the entry. Double glazing will be sure to keep you warm and toasty year round.



WHAT YOU GET

- A fully transportable home
- Made to order to suit your selections
- Quality workmanship
- Full design and delivery solution
- Fully compliant to NZ Building Codes
- Aluminium double glazing with thermally broken joinery, argon gas and low E glass
- Low maintenance cladding
- Fully insulated timber framed construction with external plywood bracing to suit even in the highest wind and earthquake zones
- Exterior window facings and sills
- Gas hot water (for hot water on demand)
- Fully fitted kitchen and bathroom
- French doors
- LED lighting throughout
- Decking and steps

ALSO INCLUDED:

- One-on-one consultation and a key contact to call with any of your queries.
- Building consent and Code of Compliance for the cottage
- Transport and delivery (conditions apply subject to access)
- Pile foundations and baseboards (subject to site)
- Full length verandah and deck

SIZE: 10.6 x 6.1m + 12.1m² verandah

* Standard pricing includes the back landing and steps. Upgrade to a closed in mudroom / porch with windows and aluminium panels upon request.

LARGE TWO BEDROOM COTTAGE

65m²

